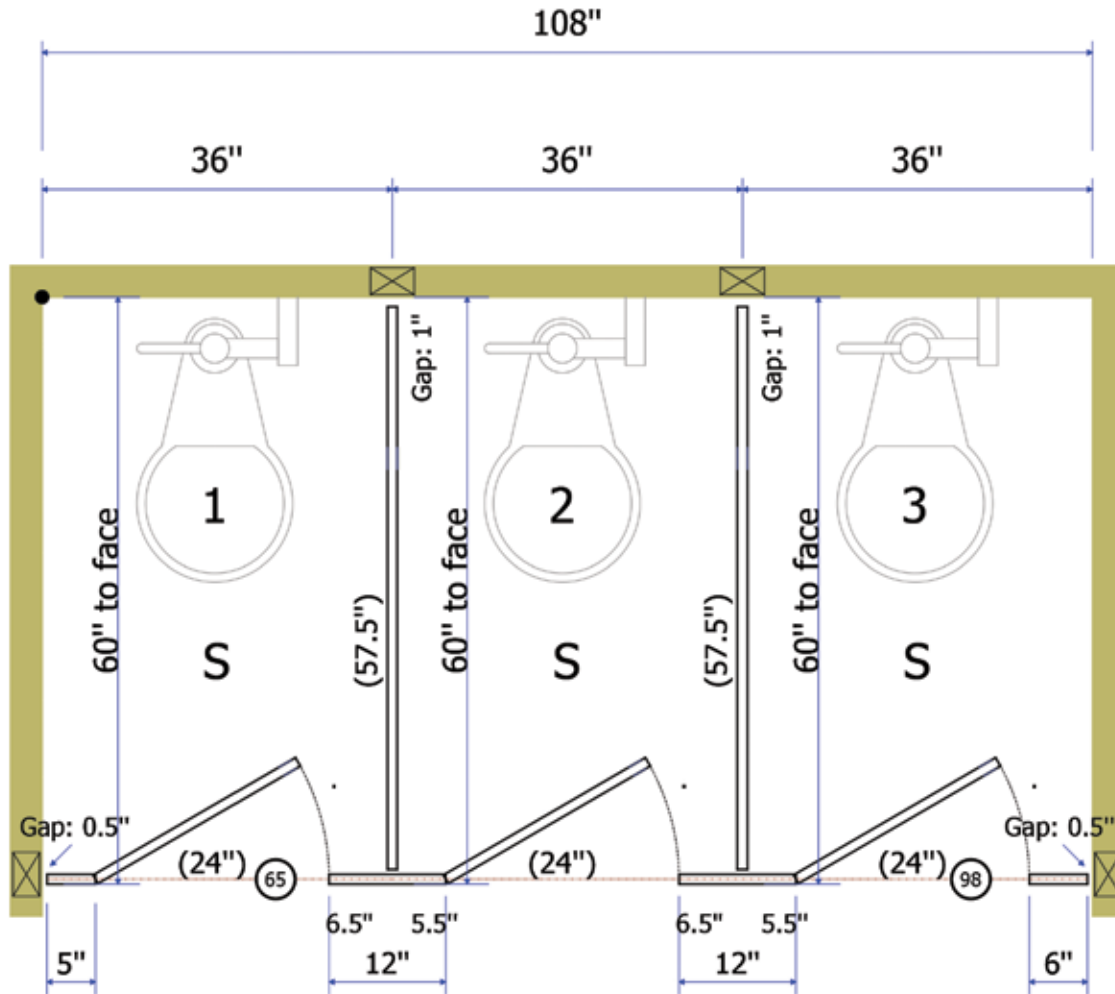


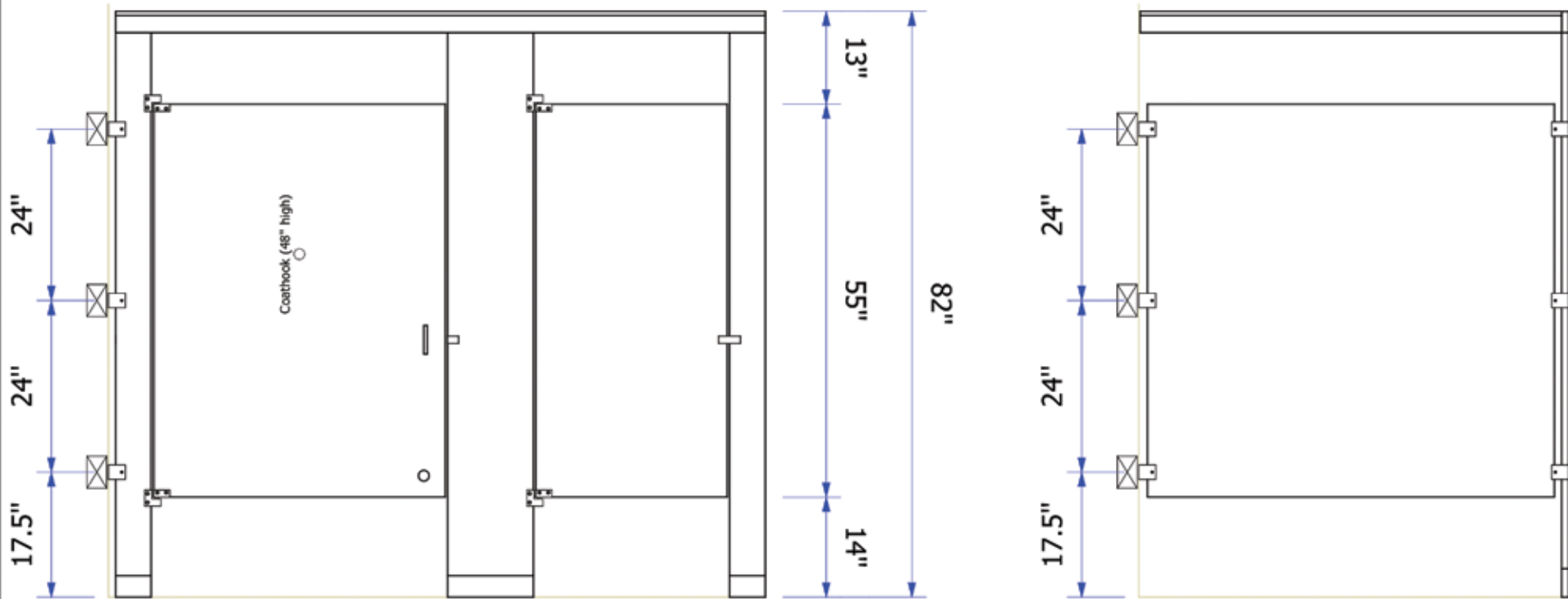
**LEGEND**

(R) Grab Bar Reinforcement

(##) Headrail



|                                                                                             |                                |                                                |
|---------------------------------------------------------------------------------------------|--------------------------------|------------------------------------------------|
| <b>Distributor:</b> Decker Equipment<br><b>Quote Name (#):</b> STANDARD BW 3 (SQML000240-2) | <b>Room Name:</b>              | <b>Quantity:</b> 1 (thus)                      |
|                                                                                             | <b>Material:</b> Solid Plastic | <b>Mounting:</b> Floor Mounted Overhead Braced |
|                                                                                             | <b>Color:</b> Not Selected     | <b>Ceiling Height:</b> N/A                     |



Material Texture: Pebble Grain (Std), Compartment Material Height: 55" High Doors/Panels - 14" AFF, Door Hardware: Vault Hinge & Slide Latch, Compartment Brackets: AL Stirrup (3/Connection), Trim Shoes: Stainless Steel, Door Thickness: 1.00", Plaster Thickness: 1.00", Panel/Screen Thickness: 1.00"

|                                                     |                                                |                            |
|-----------------------------------------------------|------------------------------------------------|----------------------------|
|                                                     | <b>Room Name:</b>                              | <b>Quantity: 1 (thus)</b>  |
|                                                     | <b>Material:</b> Solid Plastic                 |                            |
| <b>Distributor:</b> Decker Equipment                | <b>Mounting:</b> Floor Mounted Overhead Braced | <b>Ceiling Height:</b> N/A |
| <b>Quote Name (#):</b> STANDARD BW 3 (SQML000240-2) | <b>Color:</b> Not Selected                     |                            |